

Won't You Join Us?

Everyone is welcome! CWA invites YOU to join your friends, neighbors and colleagues in the promotion of California agriculture!

NAME: LAST FIRST

COMPANY NAME (If Applicable)

ADDRESS

CITY STATE ZIP

E-MAIL

PHONE

ANNUAL DUES Jan 2022 – Dec 2022

Chapter Name (see below): Imperial Valley

Member - \$40 \$ _____

Student - \$20 \$ _____

Donor Member (\$100 or more) \$ _____

American Agri-Women (optional) - \$30 \$ _____

TOTAL ENCLOSED \$ _____

Please make check payable to CWA
Send to:

California Women for Agriculture Imperial Valley
P.O. Box 2703
El Centro, CA 92244

CHAPTERS BY DISTRICT:

Northern: Lake County, North Bay, North Valley, Sacramento Valley

North Central: Merced, San Joaquin, Stanislaus
Central: Central Valley, Kern County, Tulare-Kings

Central Coast: Carpinteria/Santa Barbara, Salinas, San Luis Obispo, Santa Maria, Ventura County

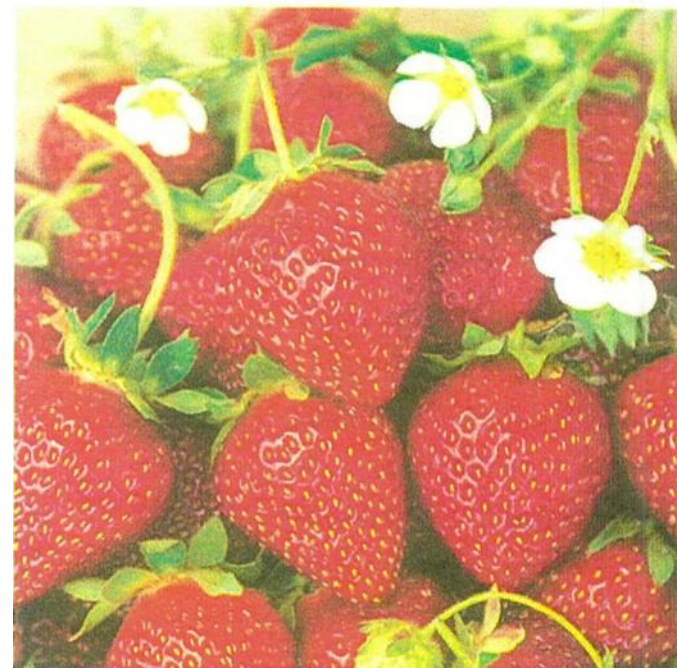
Southern: Coachella Valley, Los Angeles, Palo Verde Valley, San Diego

If you eat food and wear clothes, you are involved in agriculture.

1521 I Street
Sacramento, CA 95814



CWA believes that California agriculture is the fundamental cornerstone for the country's health and national security. Agriculture needs to be California's number one priority.



Notable CWA Projects & Activities:

- State and national grassroots, legislative and regulatory campaigns on issues such as water, air quality, labor, land use, private property rights, food safety, animal welfare and biotechnology.
- Adopt-a-Legislator program - CWA recognizes and supports the members of our California legislature and strives to ensure each member has an understanding of the issues important to agriculture.
- Cornucopia Award - given to urban state legislators who demonstrate a willingness to enter into dialogue with agriculture.
- Scholarships - provided by many of our chapters to both college-bound students and educators.
- Co-host the annual Ag Boosters Barbeque in Fresno, CA.
- Statewide membership meetings, including leadership and personal development activities.
- California Agriculture Day at the Capitol with CA Dept. of Food & Ag - an event which provides the legislature and their staff with an opportunity to experience the diversity of California agriculture.
- School gardens and other healthy eating programs.
- Programs like "Farmology" and the Agricultural Awareness and Literacy Foundation (AAL) provide many of our state's youth with their first exposure to how their food and fiber are grown.
- Affiliation with American Agri-Women (AAW).
- Support the California Foundation for Agriculture in the Classroom.



Our Organization

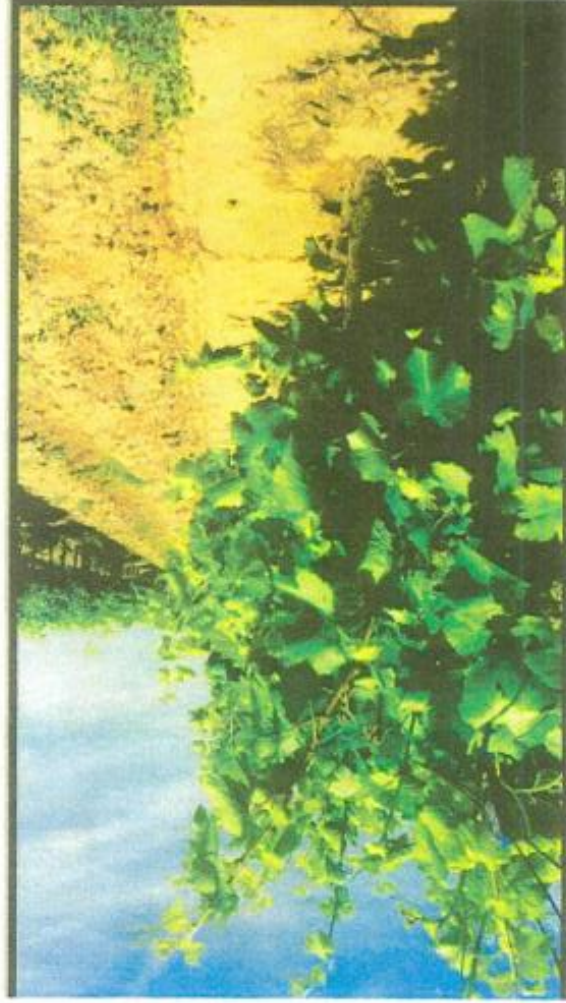
With over 1,500 member-volunteers, California Women for Agriculture (CWA) is the largest and most active, all-volunteer, grassroots, agricultural support organization in California. Established in 1975, our membership is comprised of women and men who come from a variety of backgrounds and professions such as farmers, ranchers, bankers, homemakers, teachers, attorneys, community and civil service employees and other agriculture-related support businesses.

Our Mission

CWA members believe California agriculture needs to be built, maintained, and protected for our future generations by educating consumers, policy makers and our membership. We provide the information, skills and network so our volunteers can make a difference at the local, state and federal levels. Our founding principle is to ensure and maintain a "seat at the table" for all of California's farmers and ranchers. CWA also has a strong commitment to education and agricultural awareness.

Our Community

Wherever you are in California, CWA is there. Our members network with other professionals and industry leaders at statewide meetings, our annual convention and other community and statewide events. CWA chapters reflect the diversity of California's population and provide members with opportunities to develop skills enabling them to become leaders in their own communities. We embrace those who share our vision and welcome those wanting to make a difference in promoting agriculture and protecting its future.



CWA is committed to maintaining a healthy and vibrant agricultural industry for California and our nation. CWA is dedicated to ensuring that a local, reliable food supply continues to be the foundation of our state's economy for future generations. We must not rely on foreign nations for our food or allow our country to be held hostage by outsourcing our food production.